



Charter

published on 1st April 2012

Contents

1. WFEO YE/FL Standing Committee	3
2. Introduction.....	3
3. Mission.....	4
4. Vision.....	4
5. Beliefs	4
6. Goals	5
7. Organizational Structure	5
8. Organizational Structure Roles	6
1. Chair.....	6
2. Vice Chair	6
3. Secretary	6
4. Official Delegate	7
5. Council.....	7
6. Corresponding Members.....	7
9. Rules and Regulations.....	8
10. Alternating the charter	8



1. WFEO YE/FL Standing Committee

“Young Engineers / Future Leaders” (YE/FL) is a Standing Committee of the World Federation of Engineering Organizations standing committees (WFEO). It constitutes young engineers and student members of the World Federation of Engineering Organizations (WFEO) and its council members are official delegates by national engineering associations of their country.

2. Introduction

The WFEO Executive Board Meeting in Paris, France, (March 16-17, 2009), culminated in the acceptance of a proposal, which had been submitted by the Capacity Building Committee to establish a YE/FL Task Group under the auspices of the Capacity Building Committee, after five years of preparation, socializing, and networking. At the WFEO 2009 annual congress in Kuwait, (“Alternative Energy Application Option or necessity?”), the Capacity Building Committee confirmed its support to the young engineers task group. Kuwait expressed its aptitude to host the group for four years with a Kuwaiti chair. At the WFEO 2011 annual congress in Geneva (“Facing the Global Envergy Challenge”) the YE/FL Task Group became a standing committee of the WFEO. The first committee chair became Eng. Zainab Lari (Kuwait Society of Engineers, Kuwait).

The main priority of that task group was the support of students and young engineers and to facilitate communication with each other from the early stage of college studies through newly graduated engineers.

This standing committee provides educational and academic activities as well as events, such as networking, workshops, and forums, which provide invaluable experience to support engineers at the beginning of their career.



3. Mission

Recruit enthusiastic young engineers for developing and applying engineering principles for the benefit of humanity; and becoming a global reference point for international coordination, cooperation, and communication among young engineers worldwide.

4. Vision

Involvement of young engineers in the world's leading activities to gain and share knowledge and experience, which prepares them to take on future leadership roles.

5. Beliefs

Passion

To inspire the mind and heart to reach for the best.

Ethics

To be socially responsible for youth development and sustainable engineering.

Professionalism

To support and improve quality of engineering education.

Innovation

To come out with new creative ideas full of imagination.

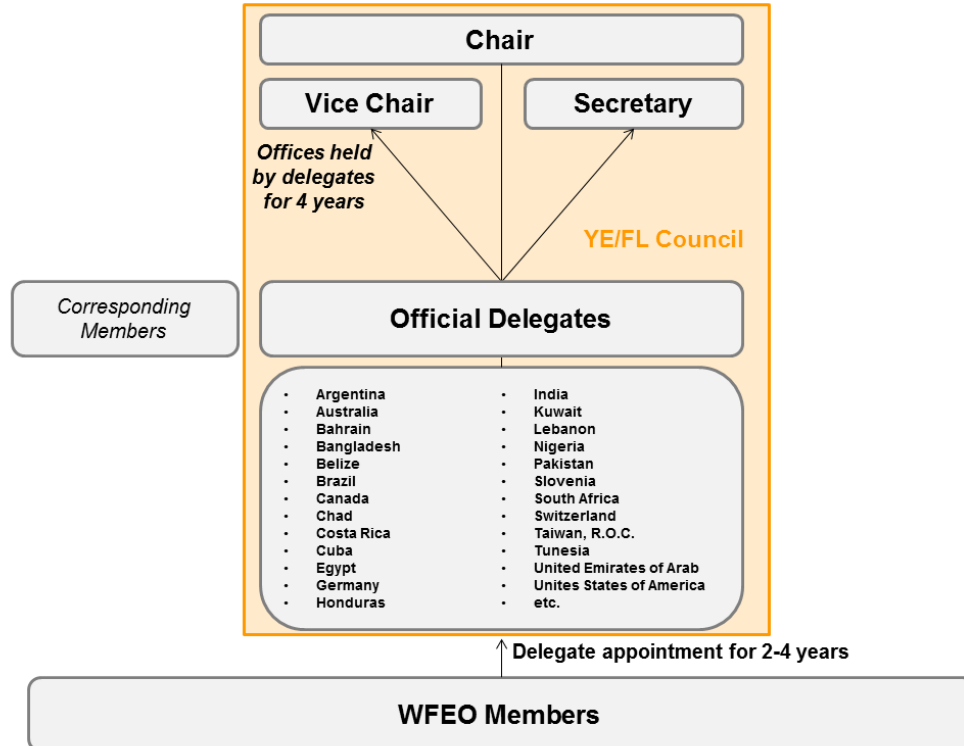
Leadership

To prepare young engineers for addressing global issues.

6. Goals

- Provide young engineers with the opportunity to contribute to society.
- Engage youth with practical situations in order to improve their thought processes and develop their soft and technical skills among young engineers worldwide.
- Create an international network among Young Engineers/Future Leaders from diverse cultures to bridge cultures and share creative ideas.
- Support students studying engineering and recently graduated engineers.

7. Organizational Structure



General structure of the WFE Young Engineers/Future Leaders Standing Committee



8. Organizational Structure Roles

1. Chair

The WFEO YE/FL chair is selected by the host national engineering association. The incumbency is appointed for a four-year term. Together with the mandate as chair, his/her national engineering association also has to provide an office for YE/FL matters.

The main tasks of the chair are to guide the committee through its work, take care of administrative YE/FL responsibilities in between official meetings, to moderate official meetings, and set mile stones to help handle matters on time.

2. Vice Chair

The WFEO YE/FL vice chair is appointed by the chair among the official delegates. His/her tasks are to assist the chair in his/her tasks. The vice chair has authority to take decision when the chair is away and assigns the vice chair to take place on behalf of the chair.

3. Secretary

The WFEO YE/FL secretary is an official delegate appointed by the chair. The incumbency is appointed for four years. The secretary assists the chair in administrating WFEO YE/FL matters. His/her main tasks are providing reports and minutes on WFEO YE/FL activities, meetings, and distributing them under the chair's supervision.



4. Official Delegate

WFEO YE/FL official delegates are appointed by their national engineering associations. Their tasks are to represent their national engineering association and therefore to represent their country. The incumbency of official delegates depends only on respective national engineering associations. Recommended terms are two to four years. The appointees are voting members.

5. Council

The WFEO YE/FL Council is the highest decision making board. Each national engineering association is asked to appoint one official delegate for the WFEO YE/FL Council. The Council meets at the regular committee meeting.

6. Corresponding Members

WFEO YE/FL Corresponding Members are interested young engineers who are not nominated by their countries. They can contribute to all the activities, but do not have voting rights. There can be more than one corresponding member from each country.



9. Rules and Regulations

The Right to Vote: Each official delegate has one vote only
Official YE/FL positions have no additional vote.

There are three classifications for the voting which are the following:

- 1- Agree to the motion made (Approval)
- 2- Dissent to the motion (Object)
- 3- Have no opinion - neutral (Abstention)

10. Alternating the charter

The formality of altering the charter requires a vote on a proposal by the entire council. Such a vote is successful when a two-thirds majority approves the proposal.