



The SciTech leverages urban development
-- an example of integration of geospatial
technology with building information model

GONG Ke

World Federation of Engineering Organizations (WFEO)

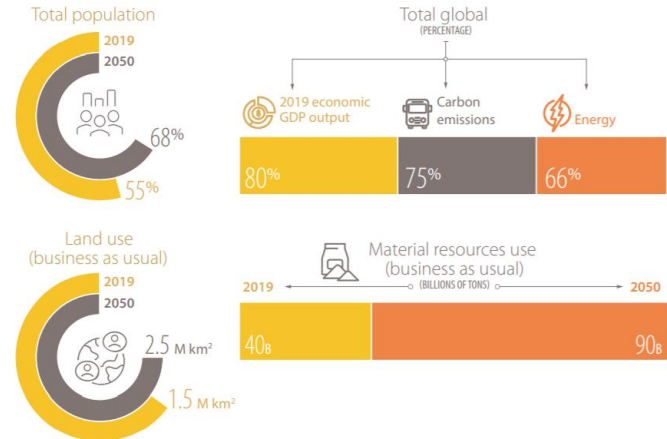


“Sustainable cities are central to achieving all 17 Sustainable Development Goals, because if current trends continue, by 2050 cities will contain approximately 70 per cent of the world’s population and produce 85 per cent of global economic output”.

In fact, all issues related to sustainable development are also concentrated in cities. Therefore, “**cities can become sustainable development leaders and laboratories for the world at large.**”

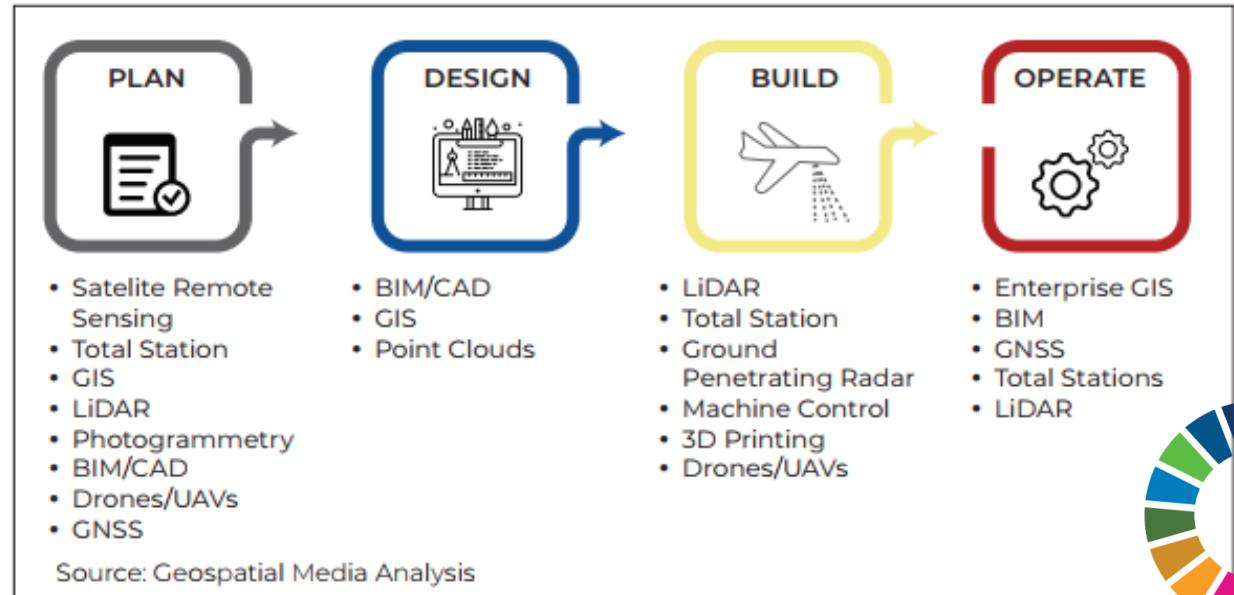


In GSDR 2019, urban and peri-urban development is identified as one of the six entry points for successful transformations.





Response to the GSDR, WFEO worked with UN-GGIM and WGIC together, released a white paper to show an example of using the lever of science and technology on the entry point of urban development.





- The Integration of Geospatial technologies and BIM provides multiple scale models supporting safe, smart, inclusive and resilient infrastructure and city planning and management.
- The paper briefly introduces the 4IR technologies and analyses the need of resilient infrastructure, elaborates the geospatial and BIM solution and gives insights by 11 cases. The paper also addresses the challenges of adoption of the model and makes recommendations for the way forward.

Table of contents

Objective	4
Preamble And Rationale	5
Fourth Industrial Revolution (4IR) Technologies to Advance The SDGs	6
Resilient Infrastructure	8
Need for Resilient Infrastructure	9
Global Infrastructure Investment	14
Geospatial and BIM Solutions for Resilient Infrastructure	16
Integrated Geospatial and BIM Solutions for Resilient Infrastructure	18
Geospatial and BIM Technology Ecosystem for Resilient Infrastructure	20
Insights Through Case Studies	21
Challenges in the Adoption of Integrated Geospatial and BIM Solutions For Building A Resilient Infrastructure As Per SDGs	29
Way Forward	32
Glossary	34



People centric governance and planning

- Life first and health first
- Human rights and inclusion in crisis



Smart city

- Big Data – integrated with geospatial + BIM
- AI – City Brain



Resilient city to public health crisis among many others

- city-science based city planning and development
- development of people centric AI enabled city-science and engineering

This work is preliminary and we are going to further and deepen this work, and to make it a part of a more comprehensive and multidisciplinary urban sciences and engineering, on which a broader collaboration is needed.



World Federation of Engineering Organizations
Fédération Mondiale des Organisations d'ingénieurs
Official partner of UNESCO (associate status)



Thank you

