

Report for “The 7th JFES-JSCE-AIJ-WFEO Joint International Symposium on Disaster Risk Management”

The International Symposium associated with Disaster Risk Management (DRM) was successfully held by the effective collaboration among several academic, engineering organizations: Japan Federation of Engineering Societies (JFES), Japan Society of Civil Engineers (JSCE), Architectural Institute of Japan (AIJ), and World Federation of Engineering Organizations (WFEO), and supported by Science Council of Japan (SCJ), at Nihon University (Chiba, Japan) from 9:00 to 12:00 in Sep. 5, 2013 during the 2013 JSCE annual meeting. This international symposium has been sequentially running since 2007 to provide the global community the opportunity to discuss disaster restoration, better mitigation techniques and prevention plans for severe future disasters based upon experiences world-wide. In this time, we invited 8 guest speakers from Japan, Iran, Taiwan, and Philippines who belong to a university or institute and have the research background of DRM or disaster prevention. They had unique presentations for DRM based upon the varieties of themes through civil engineering, architecture engineering, financial policy, and legal policy viewpoints. After that, the speakers and the audiences (approximately 50 people) had useful and practical discussions.

The detailed presentations and discussions are the followings. In opening remarks, Dr.Ishii (WFEO Committee on DRM [CDRM], Chair) emphasized the importance of the DRM to prevent economical loss and human damage. Sequentially, the guest speakers' presentations about (1) Development of a forecast system for guerrilla-type heavy rain (Prof.Yamada, Chuo Univ.), (2) Example of typhoon-induced severe damage in Taiwan (Dr.Lai, Cheng-Kung Univ.), (3) Resistant tests for the higher buildings under huge earthquake (Prof.Nakajima Kyoto Univ.), (4) Gap between reality and ideality in the recovery processes from damage due to the Great East Japan Earthquake (Prof.Ubaura, Tohoku Univ.), (5) How to handle trans-boundary disaster risk management (Prof.Ali, Iran University of Science and Technology), (6) Spatial mapping of economic loss against disaster vulnerability (Prof.Kazama, Tohoku Univ.), (7) Development of the investment model for disaster prevention used in the world-wide political framework (Dr.Takeya, JICA), and (8) Example of the legislation about disaster prevention and risk management in Philippines (Prof. Pacheco, Univ. of the Philippines Diliman) were conducted. After that, Q & A between speakers and audiences resulted in the valuable discussions, such as gaps between civil engineering viewpoint and architecture one on DRM and political problems in Tohoku (Japan) reconstruction processes. Finally, Prof.Komatsu (Subcommittee leader in CDRM) closed the symposium by addressing the importance of DRM again.

This symposium, held by several engineering associations, offers multi-faceted examples and ideas about DRM. We are planning to have a new symposium in the next year in AIJ 2014 annual convention (Kobe, Japan).

The 7th JFES-JSCE-AIJ-WFEO Joint International Symposium on Disaster Risk Management

Program

09:00 Start of the Program

Moderators: Kazumasa ITO (WFEO-CDRM / CTI Engineering Co., Ltd.)

Kenichi TSUKAHARA (WFEO-CDRM/ Member of SCJ Committee
on WFEO/ Kyushu University, Professor)

Opening Remarks by Yumio ISHII (Past President of JSCE, Member of SCJ
Committee on WFEO, Vice President of WFEO and Chair of WFEO-CDRM)

09:10 Session Part I

*Recent Developments of Runoff Analysis and Disaster Reduction against Guerrilla Rainfall
and Line Shaped Rain Bands*

Tadashi YAMADA (JSCE/ Chuo University, Professor)

*Compound Strategy Forward to Compound Disaster Mitigation: Lessons from Hsiaolin
Village, Typhoon Morakot 2009*

Wen-Chi LAI (Invited Overseas Speaker/ Taiwan National Cheng-Kung University,
Researcher)

*Critical Engineering Needs toward Resilient Society: Collapse Quantification and Prompt
Condition Assessment*

Masayoshi NAKASHIMA (AIJ/ Kyoto University, Professor)

Actual Situation and its Problems of Reconstruction Planning

Michio UBAURA (AIJ/ Tohoku University, Associate Professor)

10:40-10:45 Break

10:45 Session Part II

*Transboundary Disaster Risk Management: Coping with large-scale natural hazards with
regional impact*

Ali CHAVOSHIAN (Invited Overseas Speaker / Iran University of Science and
Technology in Iran, Assistant Professor)

*Estimation of Water Disaster Damages after Climate Change and An Adaptation Concept in
Japan*

So KAZAMA (JSCE/ Tohoku
University, Professor)

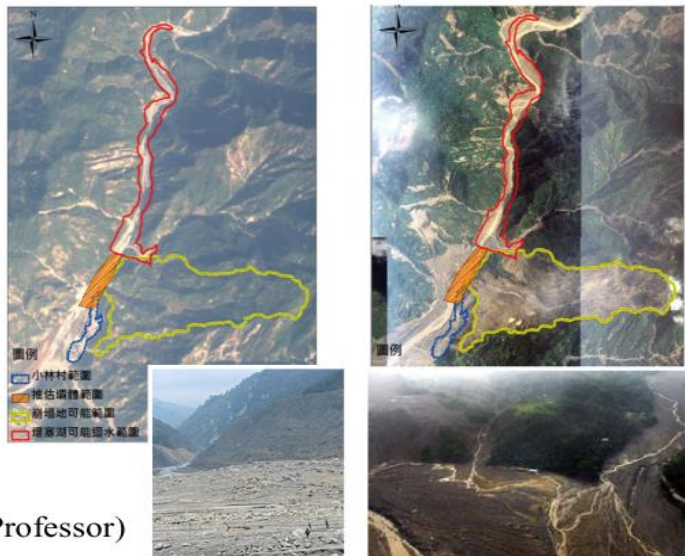
*Outline of DR²AD Model (Disaster Risk
Reduction investment Accounts for
Development Model)*

Kimio TAKEYA (Japan International
Cooperation
Agency, Visiting
Senior Advisor)

*Shifting Framework from Disaster
Management to Disaster Risk
Management: Features in the Philippine
D.R.R.M. Act of 2010 and its I.R.R.*

Benito M. Pacheco

(University of the Philippines Diliman, Professor)



11:55 Closing Remarks

Closing Remarks by Toshimistu KOMATSU (WFEO-CDRM/ Member of SCJ
Committee on WFEO/ Kyushu University, Professor Emeritus)

12:00 End of the Program