

**JFES-IAC e-News**  
**The Japanese Federation of Engineering Societies**  
**International Activities Committee Newsletter N° 6 September 2008**

**Report on WFEO- JFES-JSCE Joint International Symposium on  
Disaster Risk Management**

**Brief of the Symposium**

This Symposium is the second organized by The World Federation of Engineering Organizations, WFEO and other relevant organizations in Japan in the international program of Japan Society of Civil Engineers, JSCE's National Assembly Congress. The theme of the first in 2007 was on "River Restoration". The theme of the second is on "Disaster Risk Management".

The Symposium was held on September, 11<sup>th</sup> at Tohoku University in Sendai, Japan and organized by WFEO, Japan Federation of Engineering Societies, JFES (WFEO's Associate Member) and JSCE under support of Science Council of Japan, SCJ (WFEO's Nation Member). The Task Group on Disaster Risk Management in Standing Committee on Engineering and the Environment, CEE in WFEO was secretariat of the Symposium.

The Symposium brought together 13 papers on seismic and water related disasters and their measures, and more than 50 participants from 11 countries (Australia, Bangladesh, Canada, Indonesia, Japan, Korea, Philippines, Taiwan, Thailand, Sri Lanka and Vietnam).

Mr. Barry J Grear AO, President WFEO in his keynote lecture introduced WFEO's activities and engineering responsibility before, during and after disaster, particularly highlighted the importance of the prevention and recovery phases with his practical experiments in Southern Australia. This symposium introduced some main disaster features in the 2008 Sichuan Great Earthquake and the 2007 Super Cyclone SIDR, and the technological restoration and recovery support activities of Interdisciplinary Liaison Council led by JSCE and the suggestions for future surge storm measures in Bangladesh respectively. The main points of SCJ's proposal on adaptation to water-related disasters induced by global climate change were also presented. The practices of seismic risk assessment in Taiwan and recent researches on seismic performance based on full-scale excitation tests and retrofitting with carbon reinforced plastics of bridge columns were introduced respectively. Besides the presentations in the Symposium, some researches and practical experiments on measures for floods and tsunamis from Bangladesh, Canada and Japan were also edited in its proceedings. The contents, discussion results and recommendations in the Symposium are certainly useful for the Task Group on Disaster Risk Management.

This symposium brought together more speakers, researchers and engineers than the first. It is expected as a hopeful catalyst for larger scale joint symposiums between WFEO and other organizations around the world in the future on disaster risk management that is globally interested in.

**Some pictures of the Symposium**



*The participation situation of Symposium (a part of symposium hall)*



**Central:** Dr. ISHII, Yumio, Chair, Task Group on Disaster Risk Management in WFEO (WFEO-DRM), Immediate Past President, JSCE; Member of Japan National Committee (JNC) on WFEO in SCJ.  
**Central to left:** Mr. Barry J Grear AO, President, WFEO, Past President, Engineers Australia; Prof. Yeou-Fong LI, National Taipei University of Technology, Dr. Chin-Hsun YEH, National Center for Research on Earthquake Engineering, Prof. Kazuhiko KAWASHIWA, Tokyo Institute of Technology, Chief Secretary of Japan National Committee (JNC) on WFEO in SCJ, Chair of the Symposium.  
**Central to right:** Prof. Shyunsuke IKEDA, Tokyo Institute of Technology, JFES Vice-President, Member of JNC; Dr. Kazuyoshi HASEGAWA, Foundation of River & Watershed Environment Management; Prof. Omer AYDAN, Tokai University; Dr. NGUYEN Son-Hung, CTI Engineering Co., Ltd., Secretary, WFEO-DRM, Secretary, Internal Activities Committee in JFES, Vice-Chair of Symposium.

**Symposium Proceedings**

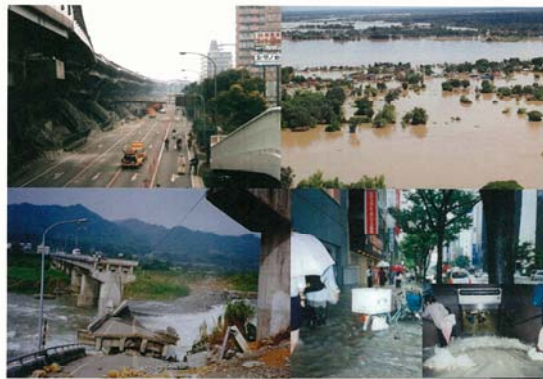
You can download the Symposium proceedings from the website of WFEO or JFES:

<http://www.wfeo.org/>

<http://www.jfes.or.jp/activitie/iac-en.html#no4>



**WFEO- JFES- JSCE  
JOINT INTERNATIONAL SYMPOSIUM ON  
DISASTER RISK MANAGEMENT**



Under the support of



SCIENCE COUNCIL OF JAPAN

Tohoku University, Sendai  
September 11, 2008

Contents

<i>Symposium Program</i> .....	i		
<b>Opening Address</b>			
1) <i>ISHII, Yumio, Elected Representative of Nation Members, WFEO, Chair of IAC-JFES, Past Immediate President, JSCE</i> .....	iii		
<b>Closing Address</b>			
2) <i>IKEDA, Shyunsuke, Vice-President, JFES</i> .....	vi		
<b>Keynote Lecture</b>			
<b>World Federation of Engineering Organisations and Engineering Responsibility Before, During and After Disaster</b> .....	1		
<i>Barry GREAR AO, President, WFEO (Australia)</i>			
<b>PART I PAPERS WITH PRESENTATION</b>			
1. <b>The 2008 Sichuan Great Earthquake Disaster and Technological Restoration and Recovery Support Activities of Interdisciplinary Liaison Council led by JSCE</b> .....	12		
<i>Masanori HAMADA, Waseda University, Ömer AYDAN, Tokai University (Japan)</i>			
2. <b>Scenario-Based Seismic Risk Assessment and Its Applications</b> .....	26		
<i>Chin-Hsun YEH, National Center for Research on Earthquake Engineering (Taiwan)</i>			
3. <b>Seismic Retrofitting of Bridge Columns Using Carbon Fiber Reinforced Plastics in Taiwan</b> .....	36		
<i>Yeou-Fong LI, National Taipei University of Technology (Taiwan)</i>			
4. <b>Seismic Performance of RC Bridge Columns Based on Full-scale Excitation Tests</b> .....	44		
<i>Kazuhiko KAWASHIMA* (Tokyo Institute of Technology), Hiromichi UKON and Koichi KAJIWARA (Hyogo Earthquake Engineering Research Center) (Japan)</i>			
5. <b>Features of Super Cyclone Sidr to Hit Bangladesh in Nov., 07 and Measures for Disaster - from Results of JSCE Investigation</b> .....	51		
<i>Kazuyoshi HASEGAWA, Foundation of River &amp; Watershed Environment Management (Japan)</i>			
6. <b>Proposal on Adaptation to Water-related Disasters Induced by Global Environmental Change</b> .....	60		
<i>Subcommittee on Land, Society and Natural Disasters, Science Council of Japan</i>			
<b>PART II PAPERS WITHOUT PRESENTATION</b>			
7. <b>Integrated Basin Management Through Comprehensive Flood Control Schemes in Japan</b> .....	84		
<i>ISHII, Yumio, CTI Engineering, Co., Ltd. (Japan)</i>			
		8. <b>Response of the People After Receiving the Tsunami Warning</b> .....	90
		<i>Fumihiko IMAMURA, Disaster Control Research Center, Tohoku University (Japan)</i>	
		9. <b>Tsunami Vulnerability Assessment of Cox's Bazar District, Bangladesh</b> .....	96
		<i>Mohammad Asad HUSSAIN, Ashutosh Sutra DHAR (Bangladesh University of Engineering and Technology, Bangladesh), Thisara WELHENA (University of Moratowa, Sri Lanka) and Mehedi Ahmed ANSARI (Bangladesh University of Engineering and Technology, Bangladesh)</i>	
		10. <b>Policies and Practices of Storm-water Storage and Infiltration and their Successes in Comprehensive Urban River Basin Management in Japan</b> .....	111
		<i>NGUYEN Son Hung (CTI Engineering Co., Ltd) and Masahiro IMBE (Association for Rainwater Storage and Infiltration Technology) (Japan)</i>	
		11. <b>Flood Disasters due to Recent Abnormal Rainfall and Preventive Measures</b> .....	120
		<i>Hideo OSHIKAWA, Akihiro HASHIMOTO (Kyushu University), Kenichi TSUKAHARA (Foundation for Riverfront Improvement and Restoration) and Toshimitsu KOMATSU (Kyushu University) (Japan)</i>	
		12. <b>Estimating Probability Density Functions for Tsunami Evacuation Activity Durations from Expert Panel Interviews</b> .....	136
		<i>SANJEEWA Wickramaratne, JANAKA Ruwanpura and S.C. Wirasinghe, Schulich School of Engineering, University of Calgary (Canada)</i>	
		<b>APPENDIX BRIEFS OF WFEO, SCJ, JFES AND JSCE</b>	
		1. <b>The Federation of Engineering Organizations (WFEO)</b> .....	140
		2. <b>Science Council of Japan (SCJ)</b> .....	142
		3. <b>The Japanese Federation of Engineering Societies (JFES)</b> .....	143
		4. <b>Japan Society of Civil engineers (JSCE)</b> .....	148

**WFEO President's Participation in JSCE's Roundtable Meeting on "Who Constructed it?"-Civil Engineer's Revisualization of Public's Acknowledgement of Civil Engineers' Achievements-**



*The panelists of the Meeting*

The meeting discussed how to explore effective and innovating approaches to strengthening civil engineers' professional pride and sense of responsibility and regaining the public trust and appreciation for their efforts and creations. In the meeting Mr. Barry J Grear AO, President, WFEO had a presentation on "Civil Engineering Practice" and contributed his experiments of global activities.

The participants were Presidents of WFEO, JSCE, Korean Society of Civil Engineers (KSCE), National President of Philippine Institute of Civil Engineers (PICE) and delegates from Chinese Institute of Civil and Hydraulic Engineering (CICHE) and JSCE Chapters in Indonesia, Korea and Mongolia etc.



*The participants of the International Program*

**Contact on JFES-IAC e-News**

The JFES-IAC e-News are distributed by email. For subscription, opinions and contribution for this newsletter, please contact with the following address: [nguyen@ctie.co.jp](mailto:nguyen@ctie.co.jp)

Dr. NGUYEN, Son-Hung (CTI Engineering, Co., Ltd.), JFES-IAC Secretariat